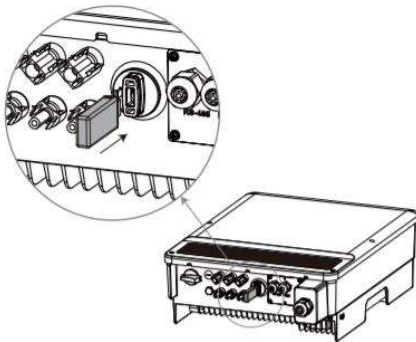


PV Master Firmware Update (Bluetooth)

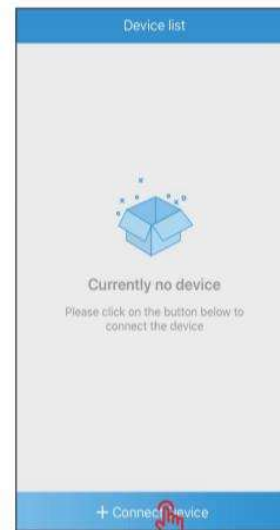
Bluetooth is available for all ES and ET devices manufactured from December 2021



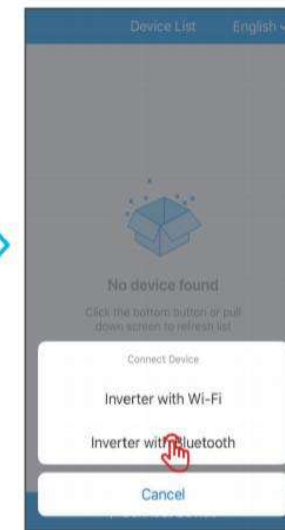
Do not pair with the Bluetooth dongle in Bluetooth-settings of your smartphone!



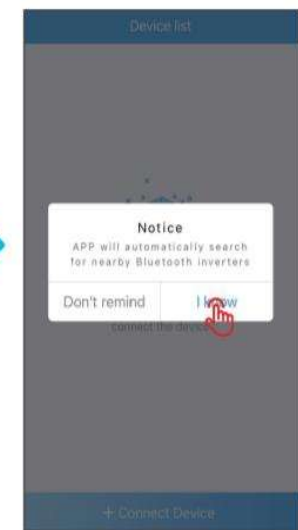
① Click "+ Connect Device"



② Click "Inverter with Bluetooth"



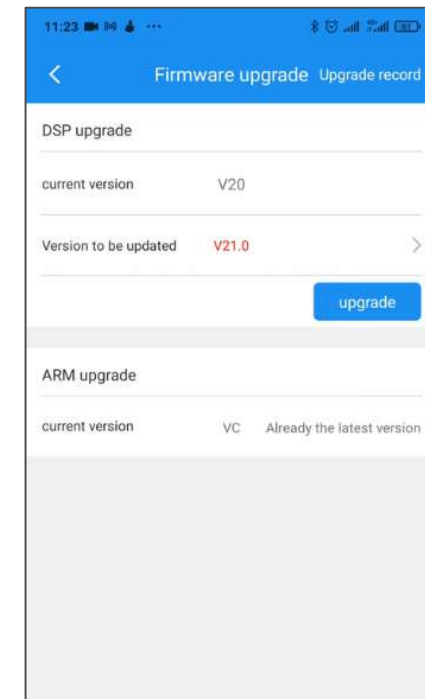
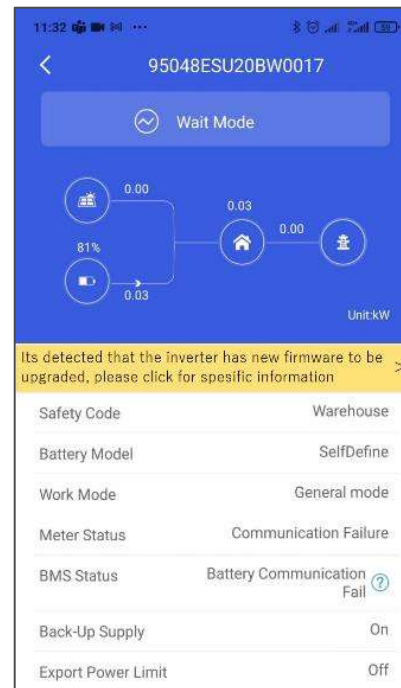
③ Click "I Know"



PV Master Firmware Update (Bluetooth)

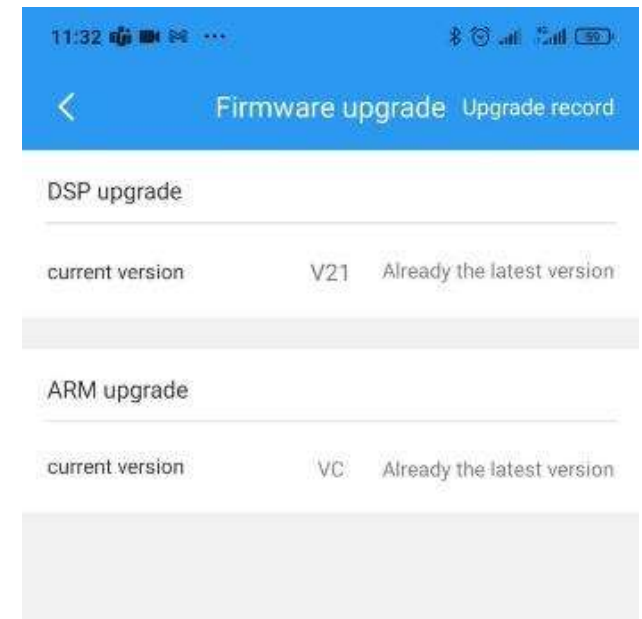
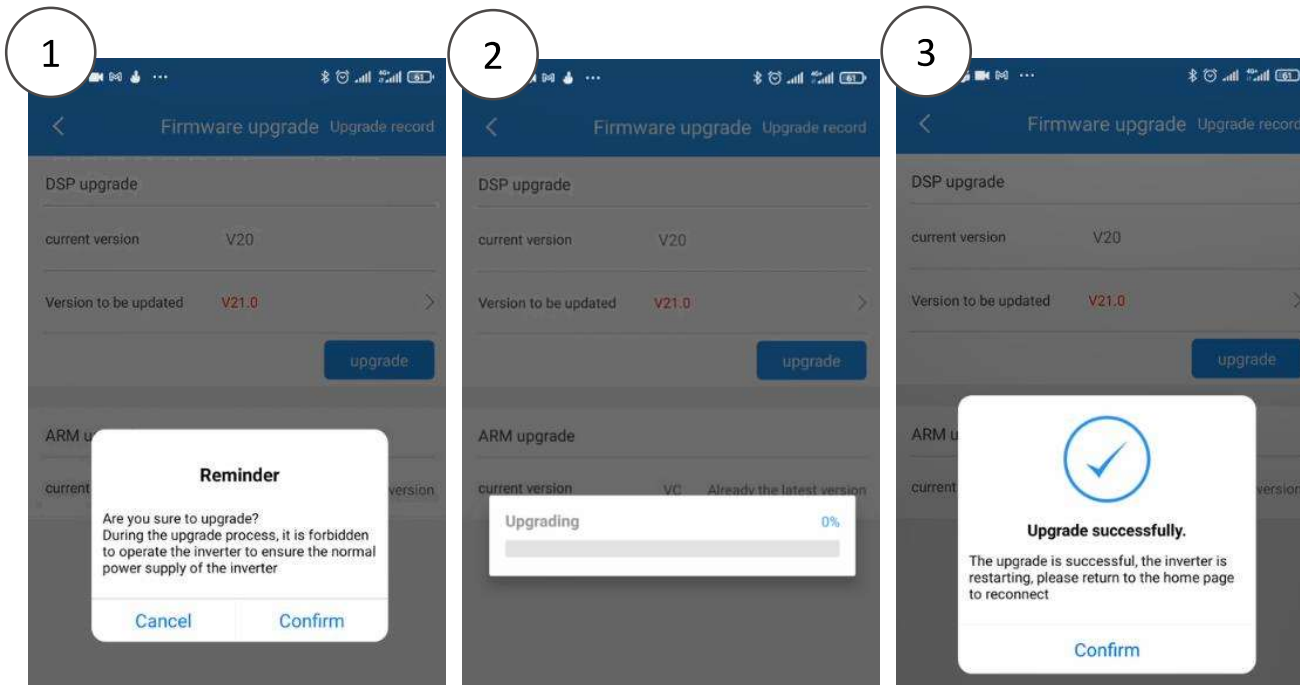


Note:
*represents the
last eight digits
of inverter's SN.



PV Master Firmware Update (Bluetooth)

The firmware update takes a few minutes to complete



Once the prompt states successful you will have to wait 5 to 10 min until the device physically reboots. Thereafter you will be able to access the settings and confirm if the update was successful.